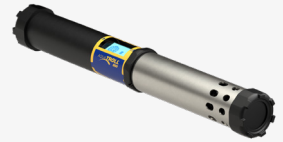
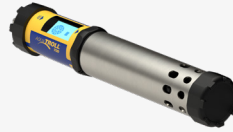
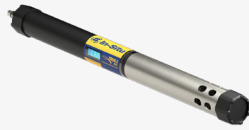




Aqua TROLL® Multiparameter Sondes

Our five- and seven-port multiparameter sondes come with interlocking, interchangeable sensors and an optional antifouling wiper. All are available with an optional vented or non-vented pressure sensor.



Aqua TROLL 500

5-port, 4-sensor
sonde + wiper

Up to 100 m (325 ft)
deployment

Aqua TROLL 600

5-port, 4-sensor
sonde + wiper

Up to 200 m (650 ft)
deployment

Internal logging

Internally powered
(6+ month battery
life typical)

Aqua TROLL 700

7-port, 6-sensor
sonde + wiper

Up to 250 m (820 ft)
deployment

Aqua TROLL 800

7-port, 6-sensor
sonde + wiper

Up to 250 m (820 ft)
deployment

Internal logging

Internally powered
(6+ month battery
life typical)

Features

- Fast-response sensors reach stability in seconds.
- A mini calibration cup onboard saves thousands in calibration solution per year.
- 3D factory calibration ensures sensors are linear across their full range.
- Active and passive antifouling extends intervals between field visits.
- Wet-mate connectors prevent water damage.
- Flexible output options include Modbus/RS-485, SDI-12, and Bluetooth®.

water
simplified.

Customize your Aqua TROLL 500, 600, 700 or 800 with these sensor options:

- | | | |
|----------------------------------|--------------------------|------------------|
| ✓ Temperature | ✓ Chlorophyll a | ✓ Rhodamine WT |
| ✓ Conductivity | ✓ Phycocyanin (BGA-PC) | ✓ Fluorescein WT |
| ✓ pH/ORP | ✓ Phycoerythrin (BGA-PE) | ✓ Ammonium (ISE) |
| ✓ Rugged Dissolved Oxygen (RDO®) | ✓ FDOM | ✓ Chloride (ISE) |
| ✓ Turbidity | ✓ Crude Oil | ✓ Nitrate (ISE) |



Aqua TROLL 400 Multiparameter Probe



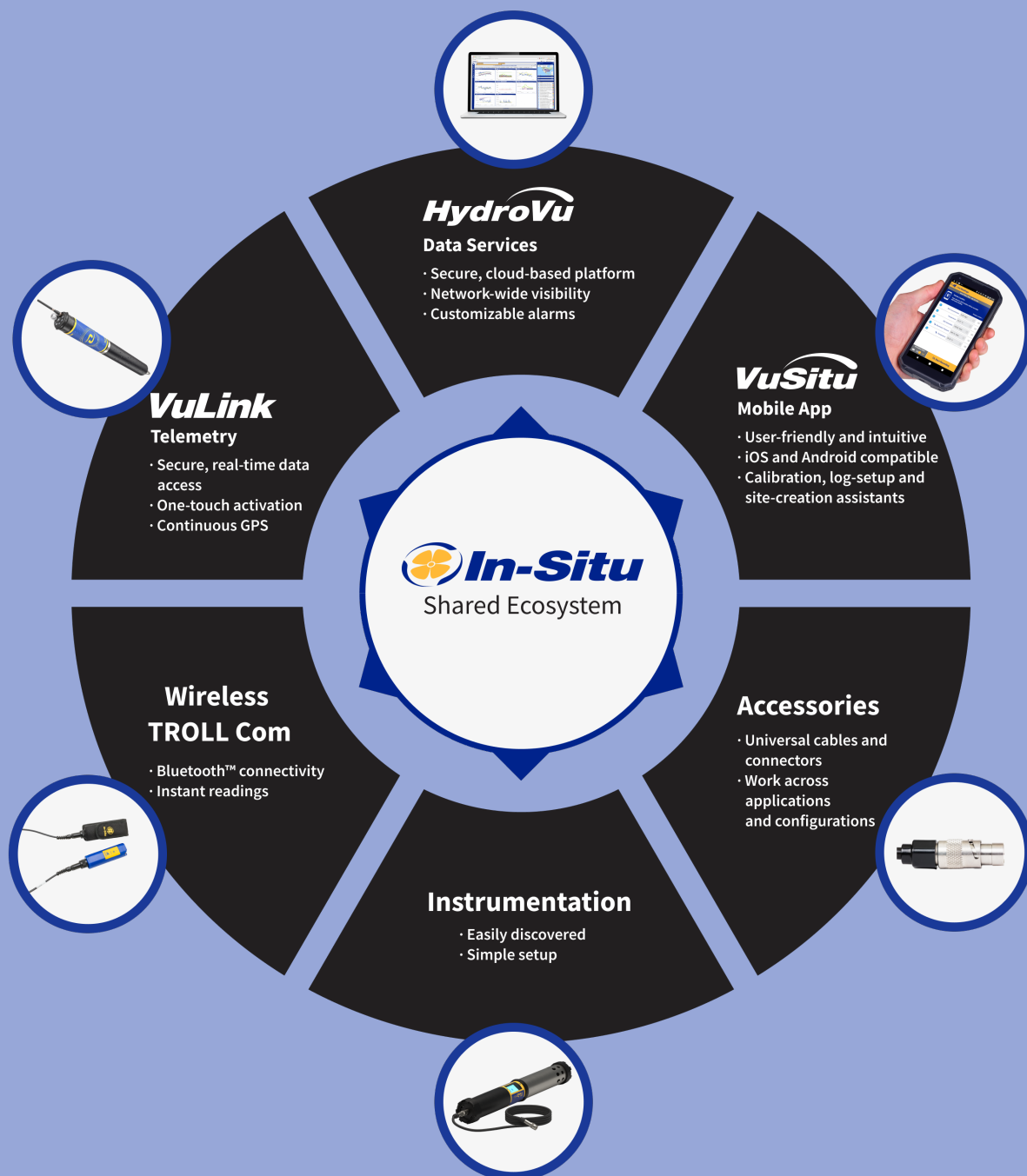
This durable, low-maintenance probe is designed for months of unattended operation in harsh conditions. 3D factory calibration and field-tested sensor technologies ensure stable, accurate results, while flexible communication protocols (4-20 mA, SDI-12, RS-485) enable easy data access.

Measures and records

- Conductivity
- Dissolved oxygen (optical RDO®)
- pH/ORP
- Temperature
- Water level and water pressure (absolute)

Connected technology that's easy to use.

All In-Situ equipment, telemetry, software, cables and accessories are designed to work together in a shared ecosystem for flexible configurations and seamless expansion of your monitoring network.



Applications

Rugged, reliable instrumentation, telemetry and software simplify water quality monitoring in a range of applications.



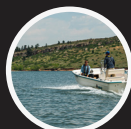
Surface Water Monitoring



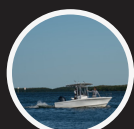
Profiling



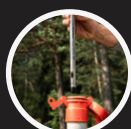
Groundwater Monitoring



Source Water Monitoring



Coastal Monitoring



Saltwater Intrusion



Aquaculture



Dredging Monitoring



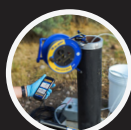
HAB Monitoring



Remediation



Stormwater Monitoring



Low-Flow Sampling

In-Situ Support

Reliable equipment is just the beginning. Our knowledgeable technical support and service teams provide timely assistance to ensure peak performance in the field.



water
simplified.

221 E. Lincoln Ave.,
Fort Collins, CO 80524



www.ekotechnika.cz