



**Delta-T Devices**

## Cloud-based data sharing platform



DeltaLINK-Cloud is a sophisticated and secure online data viewing, management and sharing platform for Delta-T Devices data loggers.

Connect and upload, then monitor, organise and share your sensor data with ease. Live data can be viewed remotely on mobile devices via animated dashboards.

- Remote data monitoring on mobile devices
- Animated live data dashboard graphics
- Easy data sharing for collaborative projects
- Powerful charting and reporting features
- Smart SIM card provided - for easy set-up
- Secure and encrypted
- Remote management of multiple sites
- Multi-language (En, Fr, De, Es, 中文)

## Try it now!

**Demo Data Available**



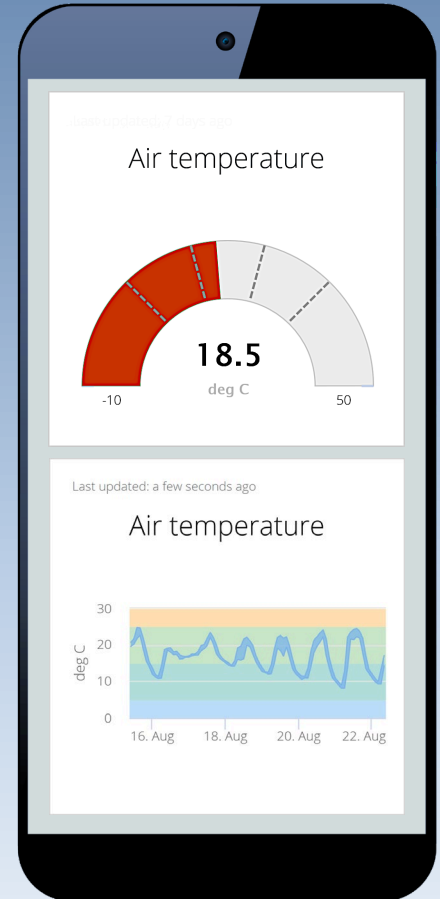
Visit

**[www.deltalink-cloud.com](http://www.deltalink-cloud.com)**

Experience the power of this advanced cloud-based platform  
- takes less than a minute

# DeltaLINK-Cloud

REMOTELY VIEW LIVE DATA



Live animated dashboard featuring 2 widgets

### DeltaLINK-Cloud Dashboards

Display selected data using simple graphical devices known as widgets. With dashboards, you can control the type, colour and position of widgets, ensuring that critical data is displayed clearly and with maximum impact.

These high quality data visualisations transform the ability of teams to identify and respond to trends or incidents, such as a threshold being exceeded. Dashboards are quickly linked to relevant data sources and can be viewed remotely on smart devices, enabling users to view and share real-time sensor data on-screen.

**DeltaLINK-Cloud**  
**[www.deltalink-cloud.com](http://www.deltalink-cloud.com)**



# DeltaLINK-Cloud

DeltaLINK-Cloud is an advanced, yet easy to use solution that helps you manage, view and share sensor data online.

Its intuitive interface enables you to:

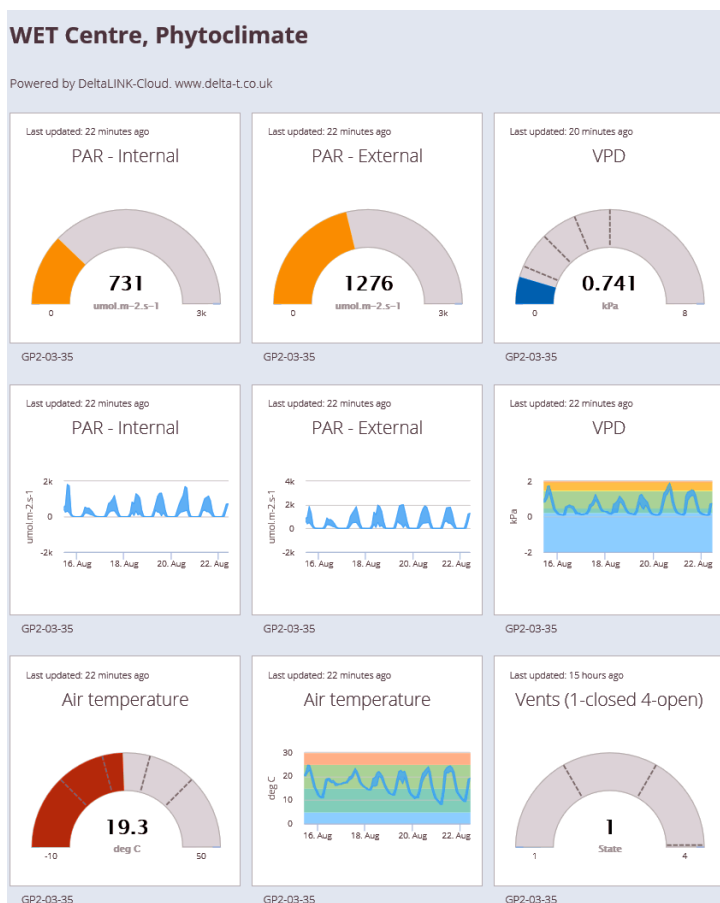
- Set the data logger to automatically upload data to DeltaLINK-Cloud at regular intervals
- Graph the uploaded data in multiple formats and styles
- Generate widgets that display critical data as live animated graphics on mobile devices
- Share access to data in report form with project collaborators and stakeholders
- Use Remote Logger Control feature to minimise time consuming site visits



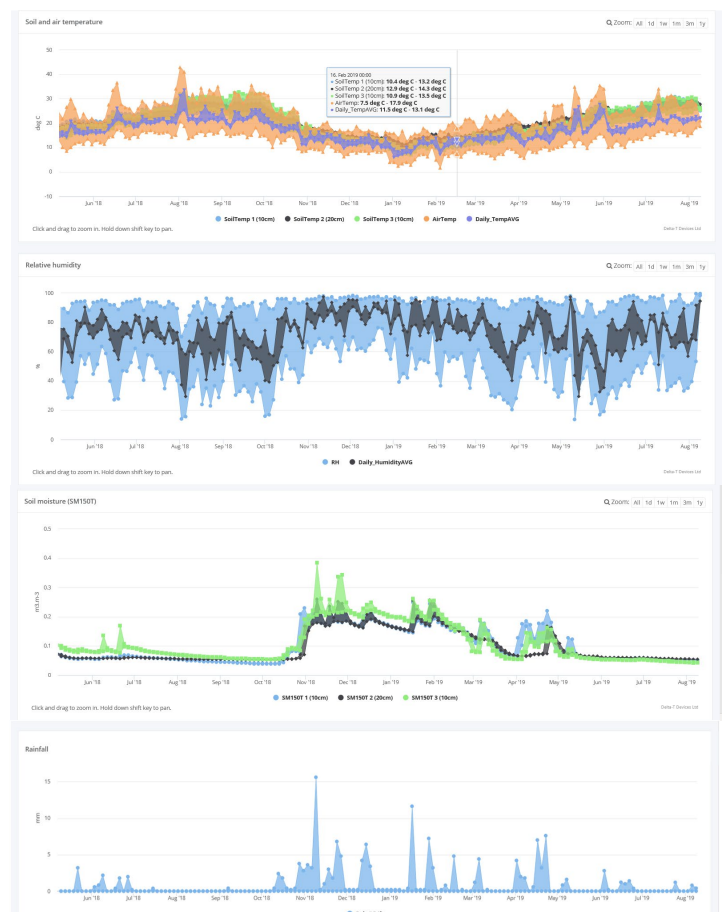
**“Your DeltaLINK-Cloud system has made a tremendous difference to our ability to manage our sites, it would be a nightmare without it.”**

**Dr Chris Davey, Aberystwyth University, Wales**

## Sample Data Dashboard



## Sample Data Report



# Key Features and Benefits

## Share live data in multiple forms

DeltaLINK-Cloud generates a URL which points directly to your filtered live datasets, reports & dashboards



**Makes collaboration fast and easy. Simply send unique URL to colleagues and they can access data**

## Aggregate data online

Easily pull together datasets from multiple data loggers at multiple sites



**Manage, view and share *all* of your project data in *one* convenient online location, remotely**

## Fast live data processing

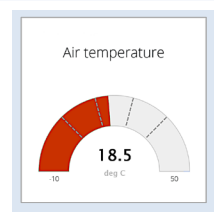
DeltaLINK-Cloud code has been rigorously engineered to provide very fast processing of live data



**Access to fully interactive live data is near instantaneous**

## Animated data dashboards

Create your own colour-coded dashboard widgets and link them to relevant data sources quickly and easily



**Remotely view critical data in instantly understandable animated visuals**

## Automated alarms

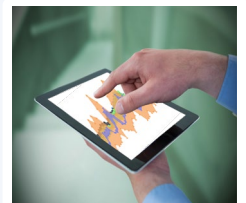
Set up alarms based on customisable data level thresholds - if the threshold is passed an SMS alert is sent to you



**Reassurance that you'll be alerted whenever data moves beyond the chosen thresholds**

## Sophisticated charting

Customise your chart styles (type, colour, multiple axis, etc.) and navigate them via a speedy & intuitive interface



**Zoom in and out of chart data with speed and ease to analyse relevant sections in high resolution**

## Data retrieval and download

Automatic data retrieval from data logger - and Excel compatible data download from the cloud



**Data uploads automatically to the cloud and can be downloaded to Excel**

## Remote logger control

Allows you to remotely program, start/stop logging, set the clock and monitor status of your loggers\*



**Remote control reduces the need to make time consuming site visits**

\* With the remote logger control feature and DeltaLINK software, users can remotely control the program, start or stop logging, modify program settings, set the logger's clock, or delete a dataset. Device status and errors can also be monitored remotely.

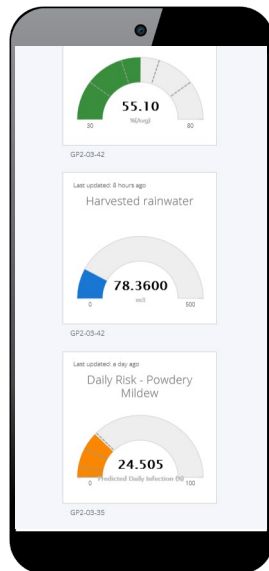


# Case Studies

## Precision Irrigation

The NIAB EMR WET (Water Efficient Technologies) Centre houses an integrated portfolio of cutting-edge growing techniques and trickle irrigation systems for the soft fruit sector. It provides commercial scale demonstrations, one to one expert technical advice, and training workshops.

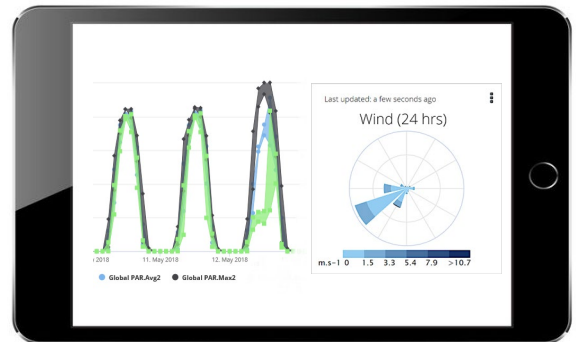
The Centre's commercially available **Precision Irrigation Package** system features our SM150T Soil Moisture Sensor and advanced GP2 Data Logger and Controller. Live system data is remotely monitored by the Centre's managers using DeltaLINK-Cloud to ensure optimum performance at all times.



## Quinta Field Study Centre

The Quinta de São Pedro Field Study Centre in Portugal is visited by many of Europe's leading Universities.

A Delta-T Devices weather station system - complete with soil moisture monitoring and solar radiation analysis provides reference data for the Centre, and is linked to the DeltaLINK-Cloud platform for immediate remote data access.



## Ordering Information

Use of the DeltaLINK-Cloud website is free, but remote access requires the purchase of:

- Cellular Modem Gateway (supplied complete with Smart SIM)
- 120 MB Data Package (provides access to cellular services worldwide)
- 12 or 36 month Dashboard subscription (optional item)

The optimal combination of hardware and data package depends on usage rates and geographical location.

Please request a quotation – email: [sales@delta-t.co.uk](mailto:sales@delta-t.co.uk)

## Compatible Products



**GP2 Data Logger**

A powerful 12 channel data logger that is easy to use, versatile, rugged and reliable. It can log most sensor types and accepts SDI-12 inputs.



**DL6 Data Logger**

The DL6 Data Logger can be used with ThetaProbes, Profile Probes and SM150T soil moisture sensors, and also accepts rain gauge and soil temperature inputs.



**GP1 Data Logger**

The GP1 Data Logger supports a wide range of environmental sensors. The GP1 is ideal for logging up to 2 ThetaProbes or 4 SM150T soil moisture sensors.



**WS-GP2 Weather Station**

The advanced WS-GP2 Automatic Weather Station is an ideal solution for research and environmental monitoring applications.



**WS-GP1 Weather Station**

The WS-GP1 Weather Station is an affordable, compact and portable weather station supplied as a ready-to-use package.

## Delta-T Devices Ltd

130 Low Road, Burwell, Cambridge CB25 0EJ, UK  
Tel: +44 (0) 1638 742922

[sales@delta-t.co.uk](mailto:sales@delta-t.co.uk) [www.delta-t.co.uk](http://www.delta-t.co.uk)

