

WS-GP1 Weather Station



Compact all-in one weather station

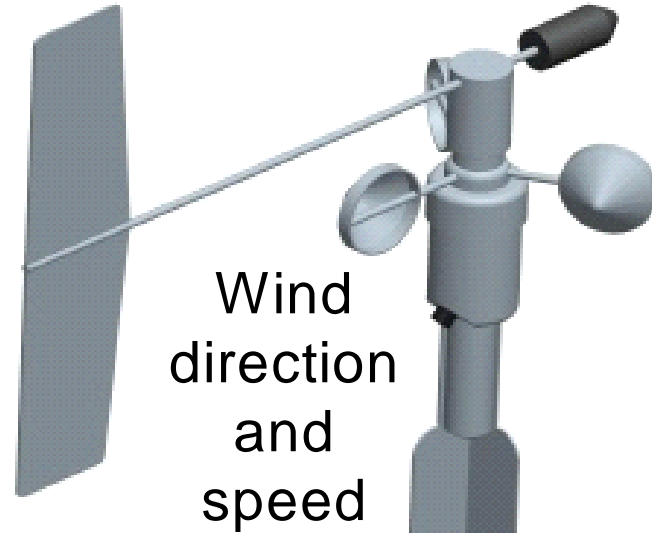
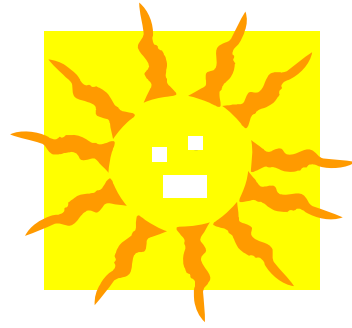
Easy to use:

- **Highly portable**
- **Pre-wired for rapid set-up**
- **PDA and GSM modem download options**

Complete package:

- **Dependable, accurate sensors**
- **2m tripod mast**
- **Pre-installed weather logging program**

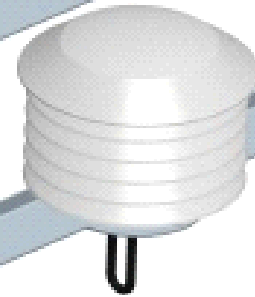
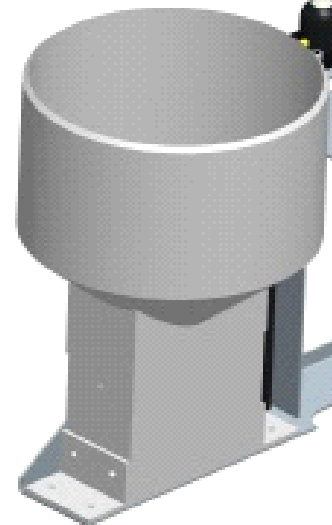




Wind
direction
and
speed

Solar
radiation

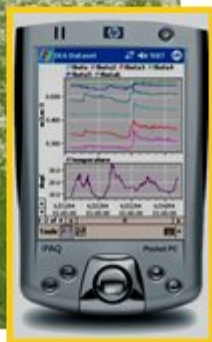
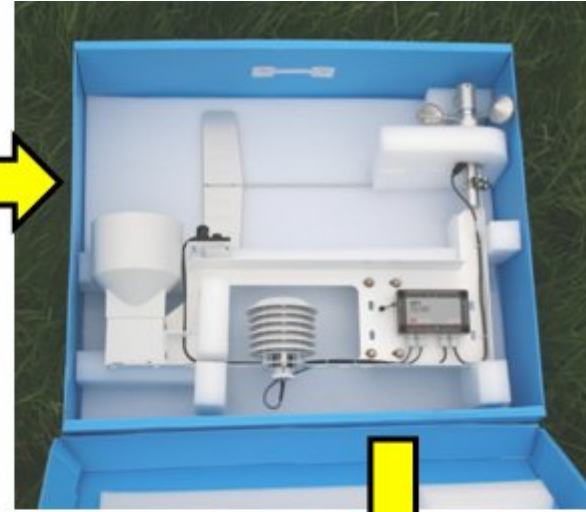
Rain



RH & air temperature

Data
logger



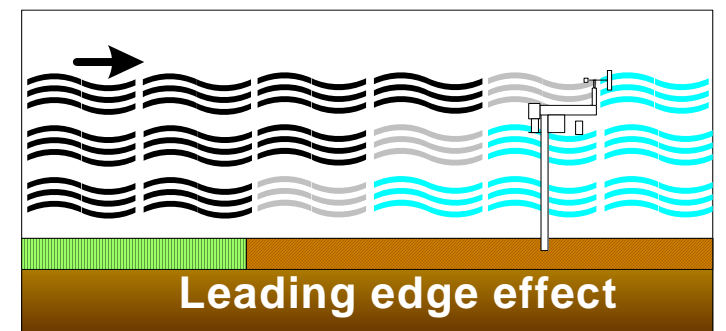
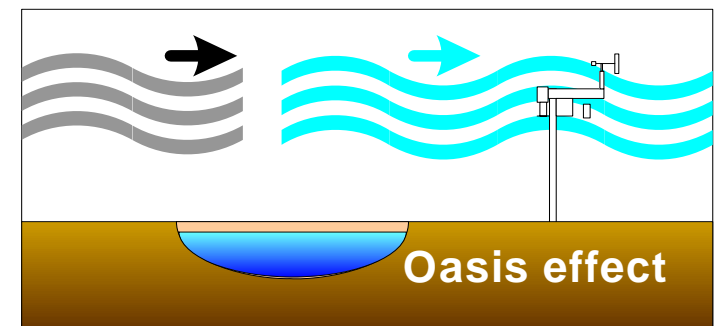
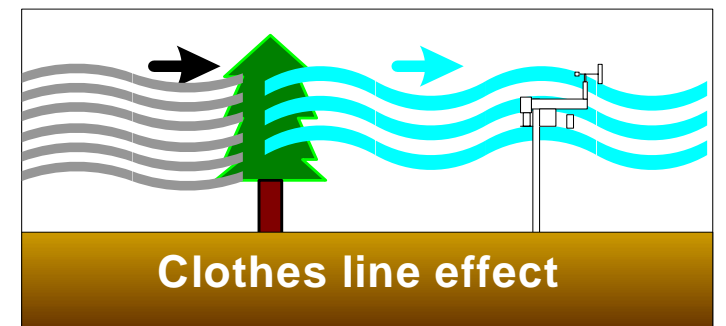
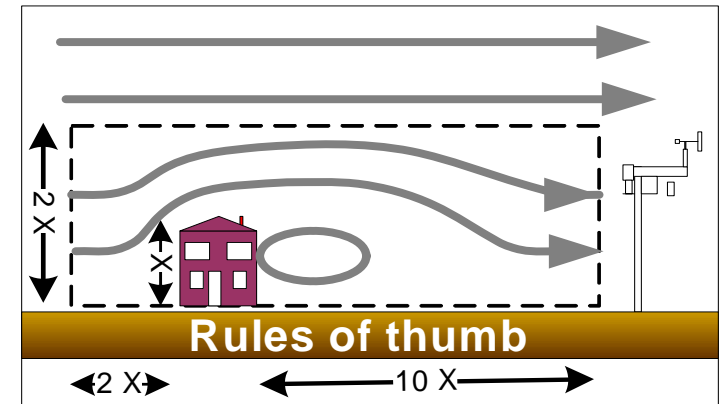


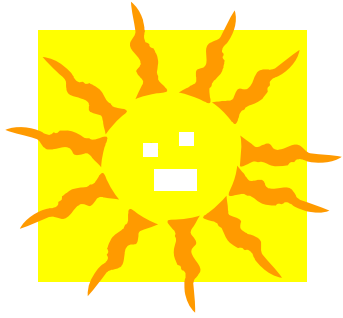
Pre-wired, pre-programmed & portable, works out-of-the-box

Choose the Location

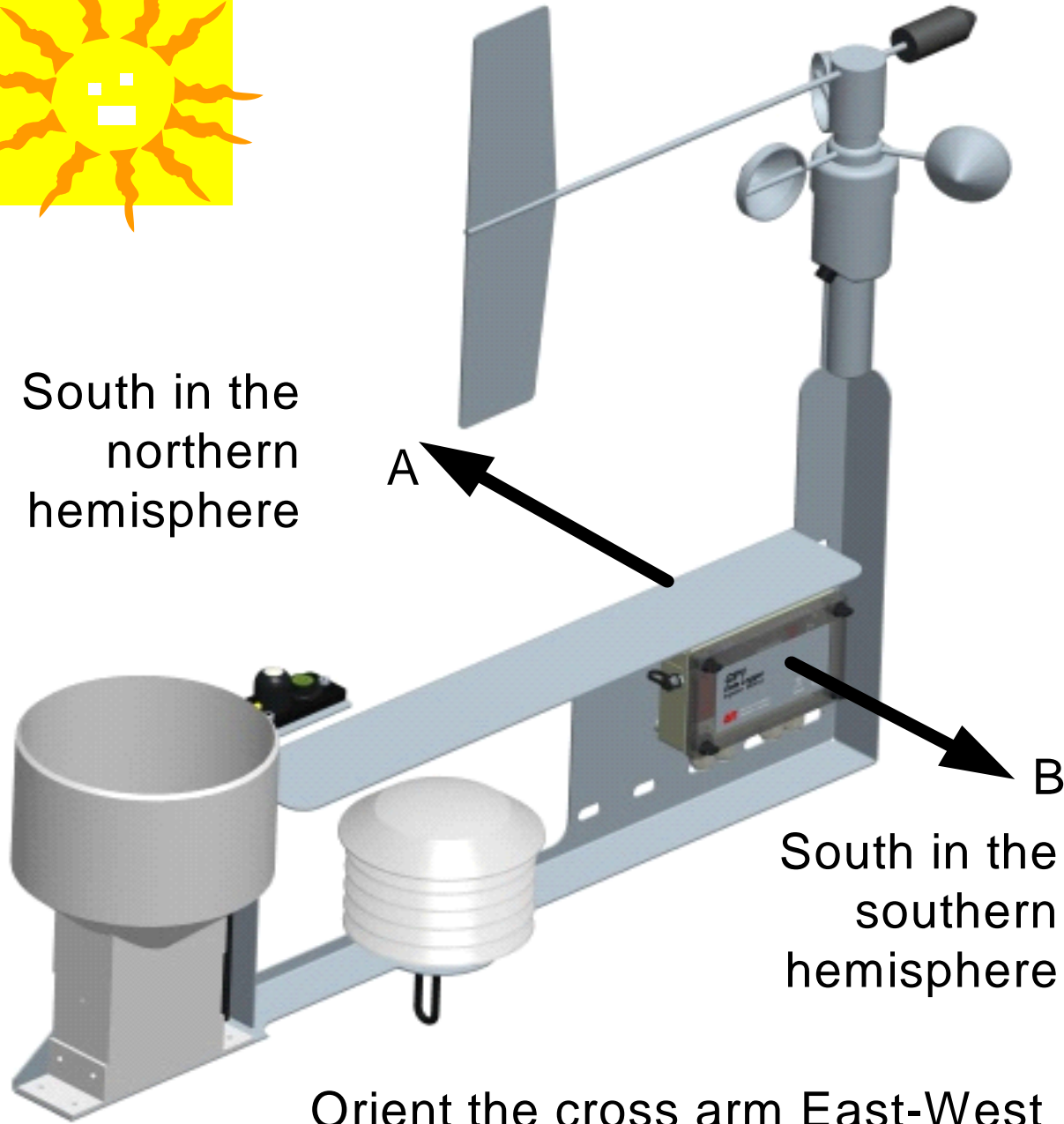
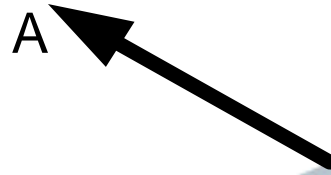
Avoid obstacles

Choose a representative location





South in the
northern
hemisphere

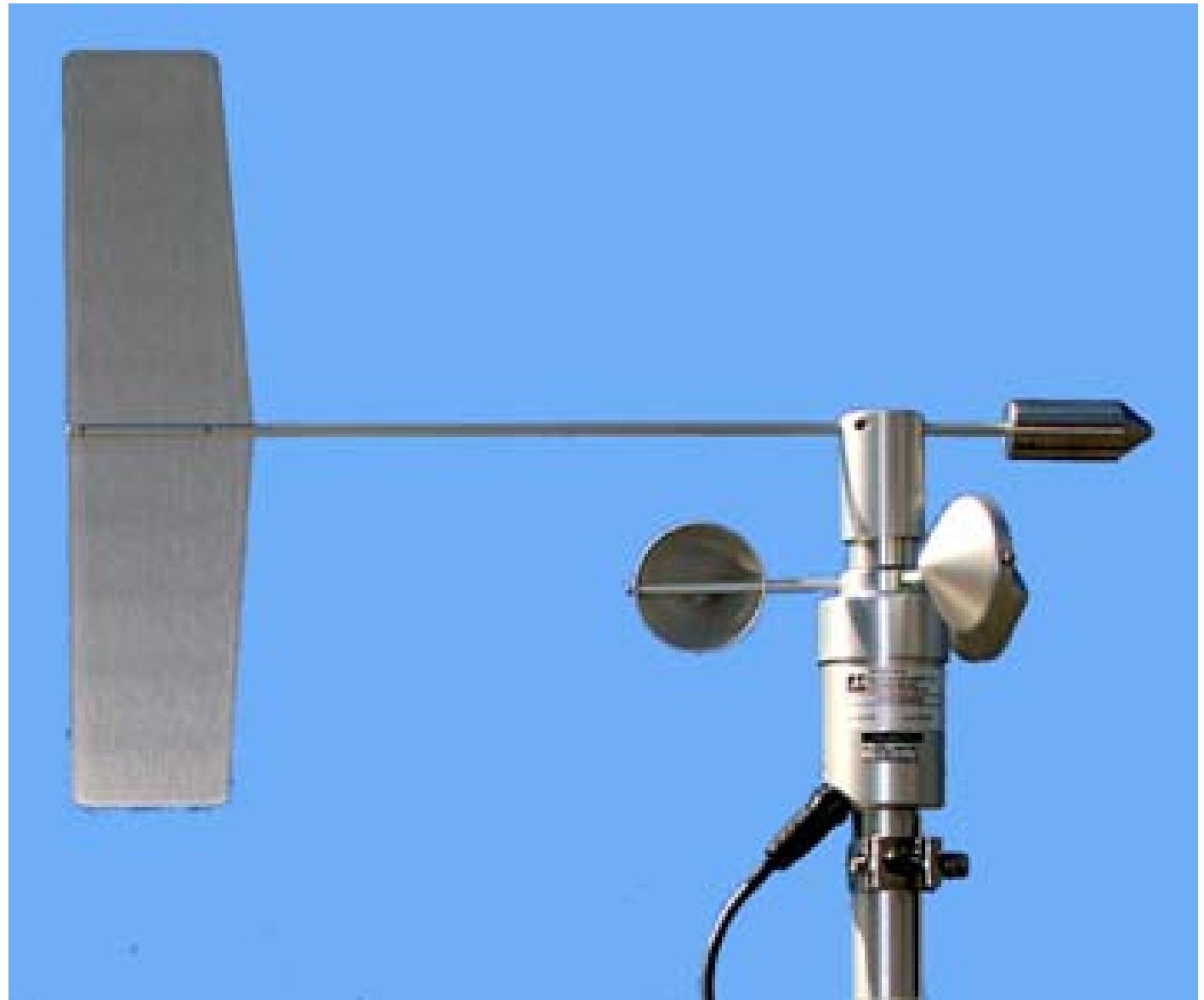


South in the
southern
hemisphere

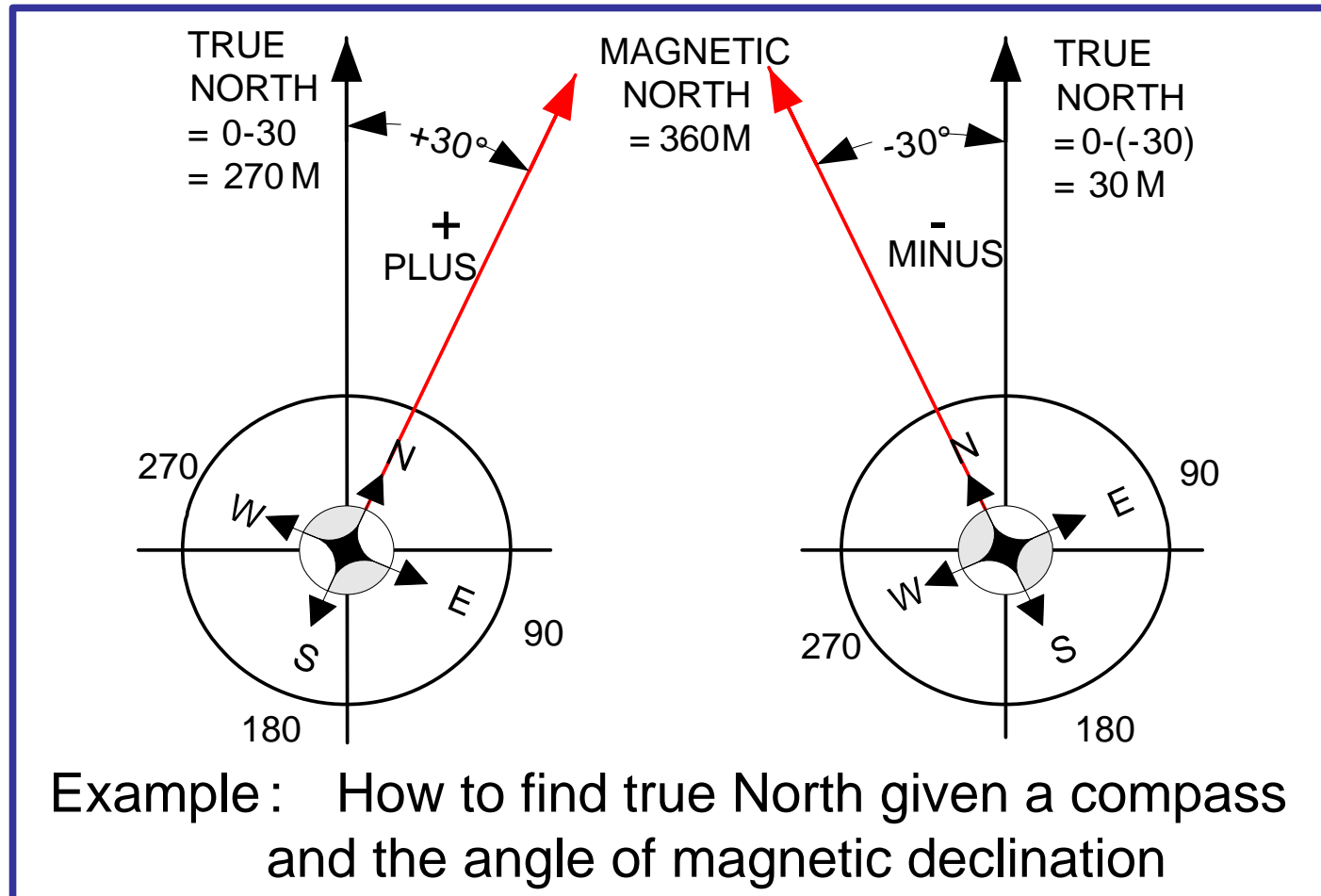
Orient the cross arm East-West

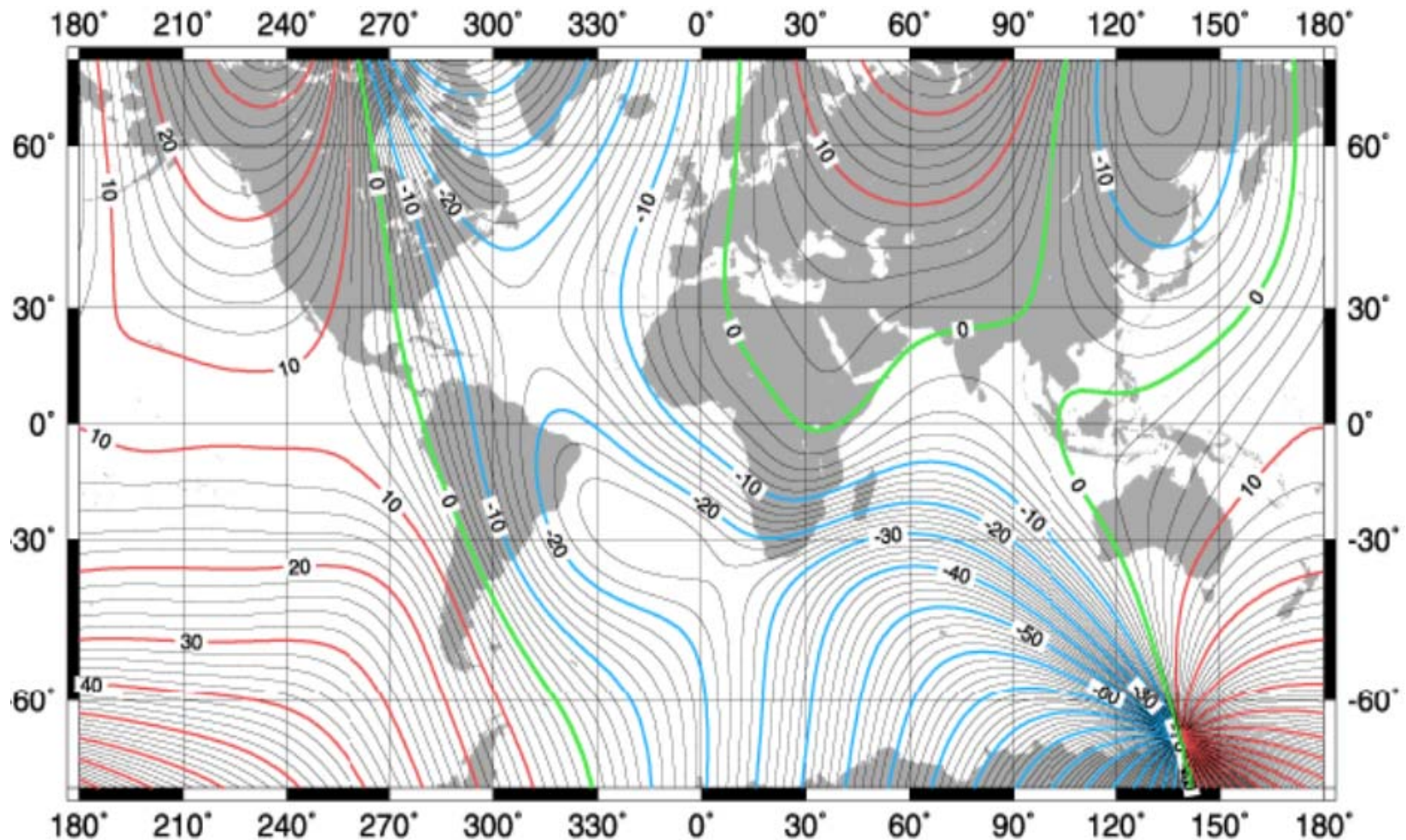
Attach the
wind vane
tail

Orient the
body to
North



Set the wind sensor to true North,
you need your
local magnetic declination





Typical magnetic declination map

(reproduced courtesy of NOAA)

<http://www.ngdc.noaa.gov/seg/geomag/jsp/struts/calcDeclination>

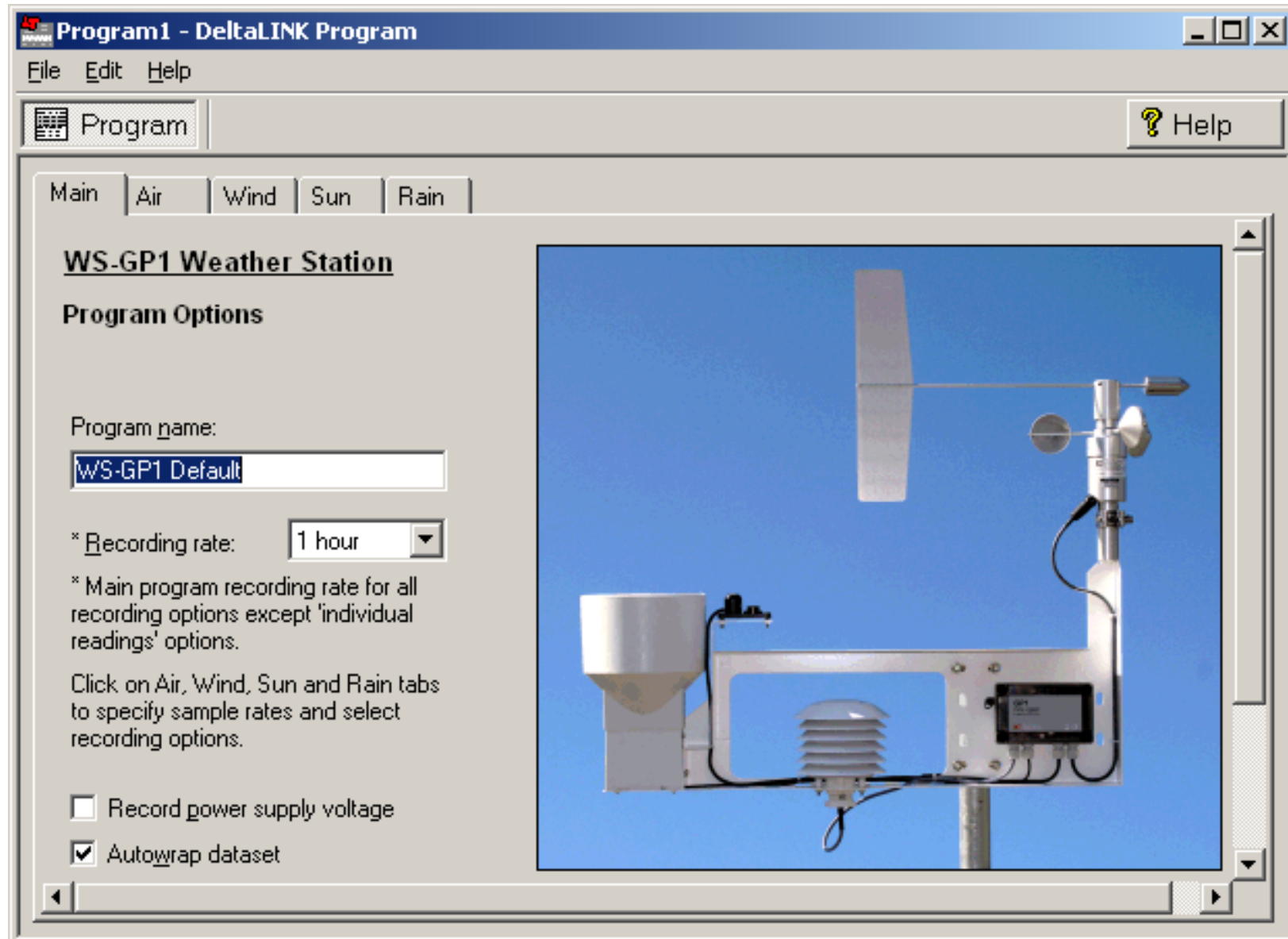
Level the light sensor



Install and start the software



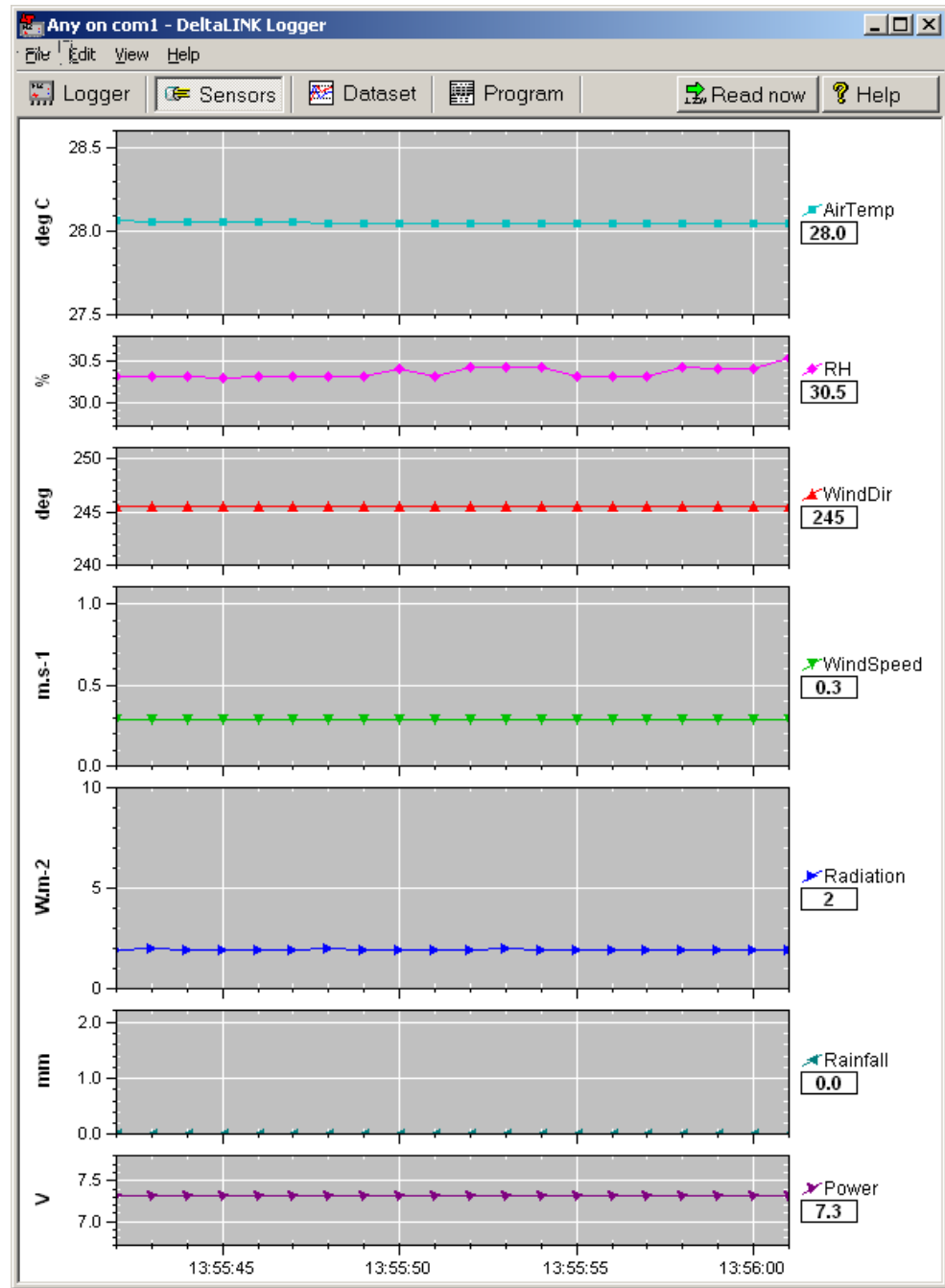
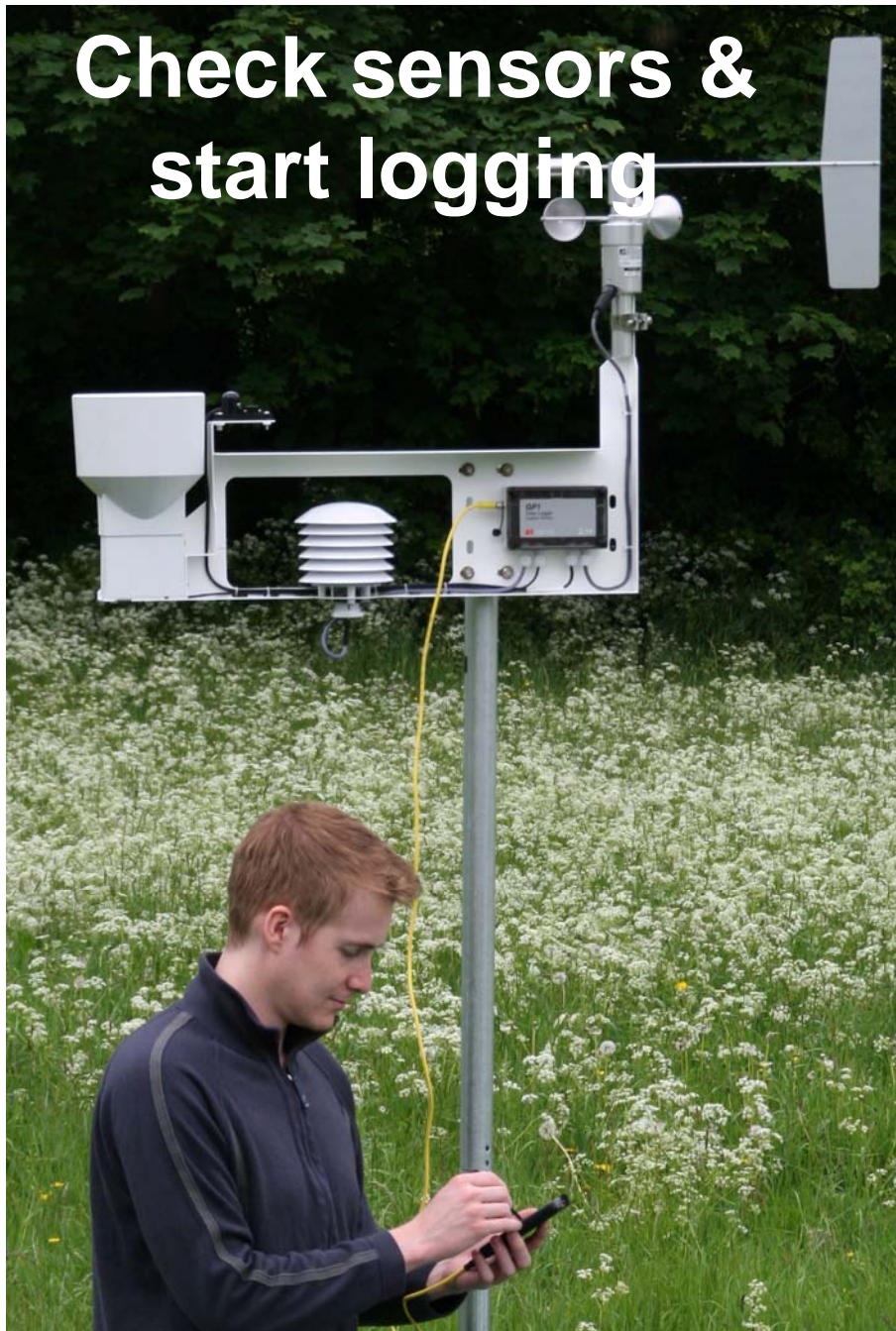
DeltaLINK-PC



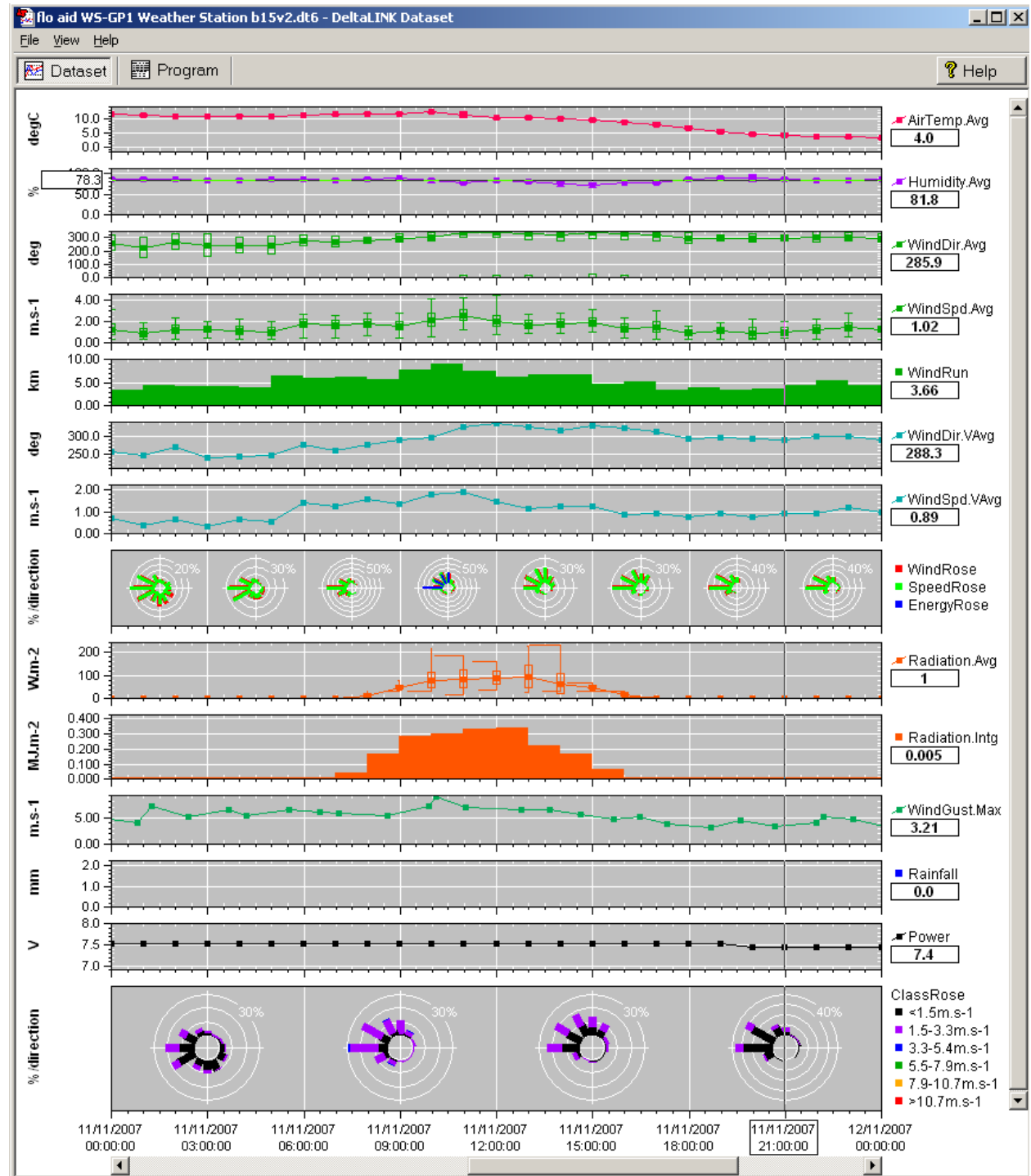
A default weather station program
is pre-installed
but you can customize it

Recording options		
Label	Units	Description
<input checked="" type="checkbox"/> AirTemp	deg C	Air temperature, individual readings
<input checked="" type="checkbox"/> AirTemp.Avg	deg C	Air temperature, average
<input checked="" type="checkbox"/> AirTemp.Min	deg C	Air temperature, mininum
<input type="checkbox"/> AirTemp.Tmin		Air temperature, time of minimum
<input checked="" type="checkbox"/> AirTemp.Max	deg C	Air temperature, maximum
<input type="checkbox"/> AirTemp.Tmax		Air temperature, time of maximum
<input type="checkbox"/> AirTemp.Std	deg C	Air temperature, standard deviation
<input checked="" type="checkbox"/> RH	%	Relative humidity, individual readings
<input checked="" type="checkbox"/> RH.Avg	%	Relative humidity, average
<input checked="" type="checkbox"/> RH.Min	%	Relative humidity, mininum

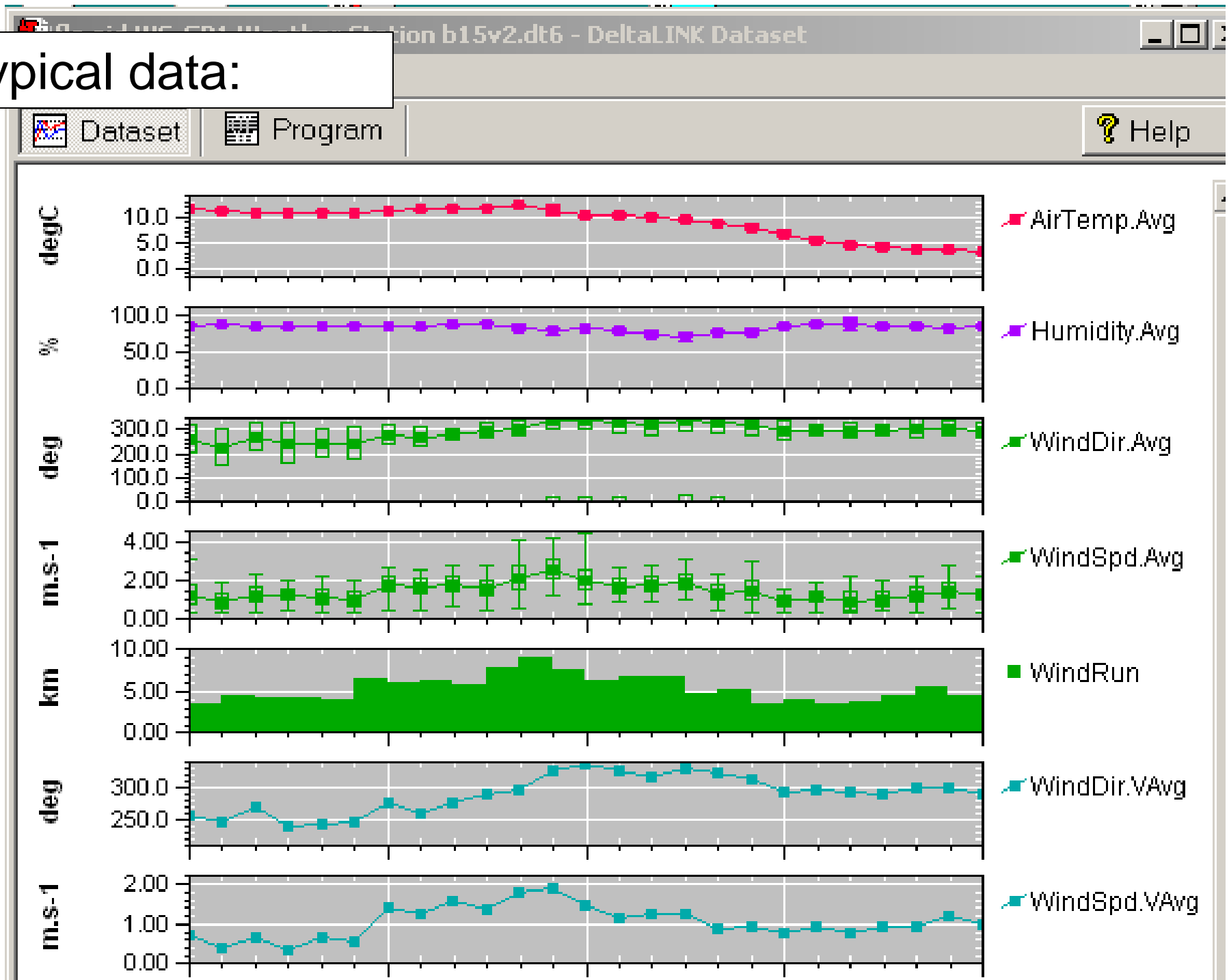
Check sensors & start logging



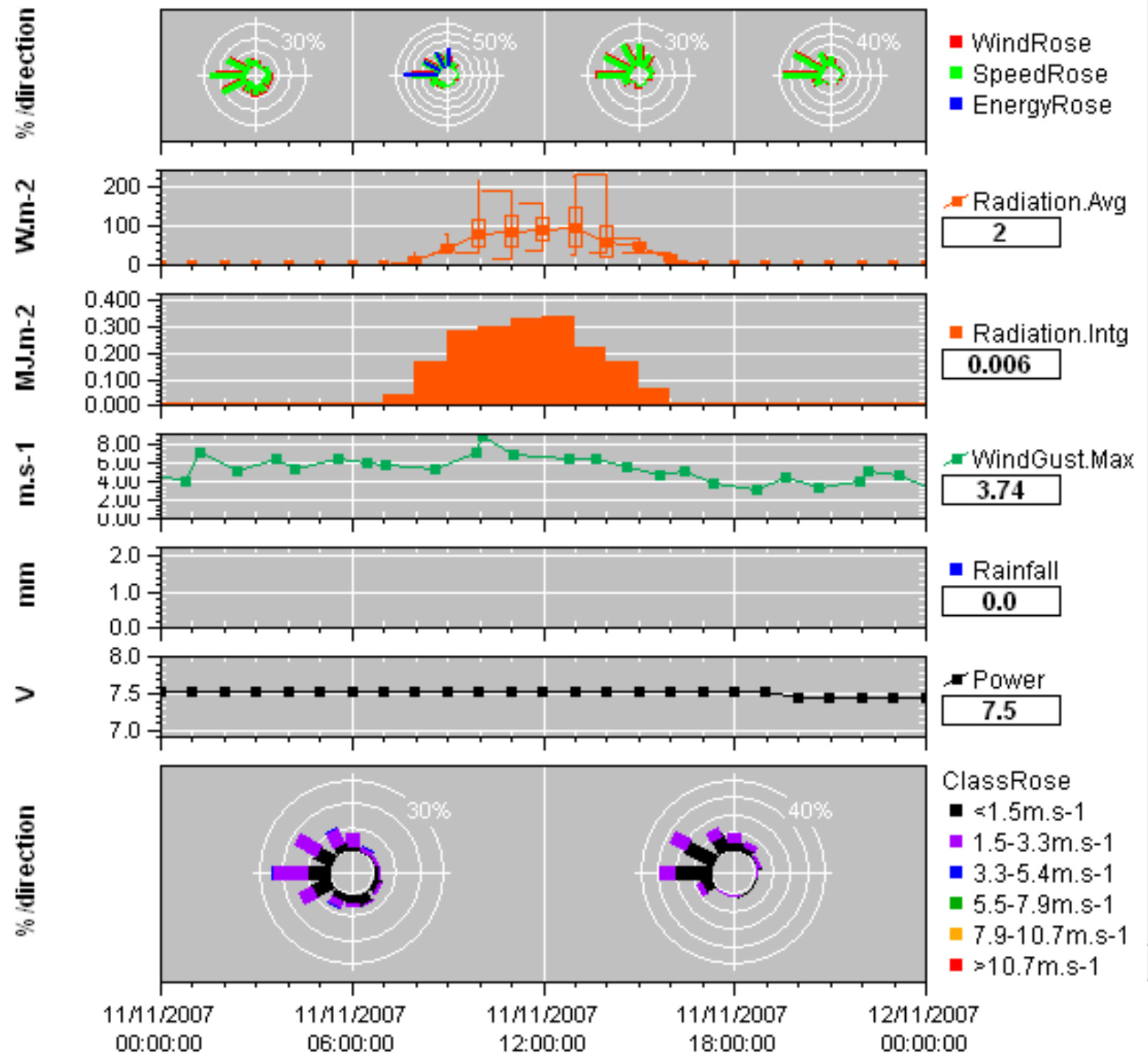
Collect and save logged data



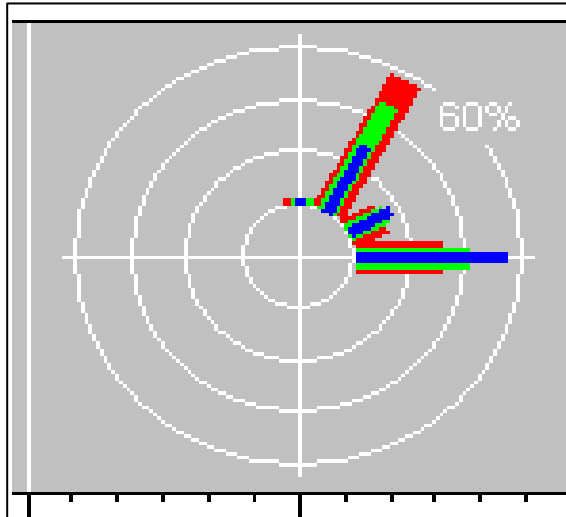
Typical data:



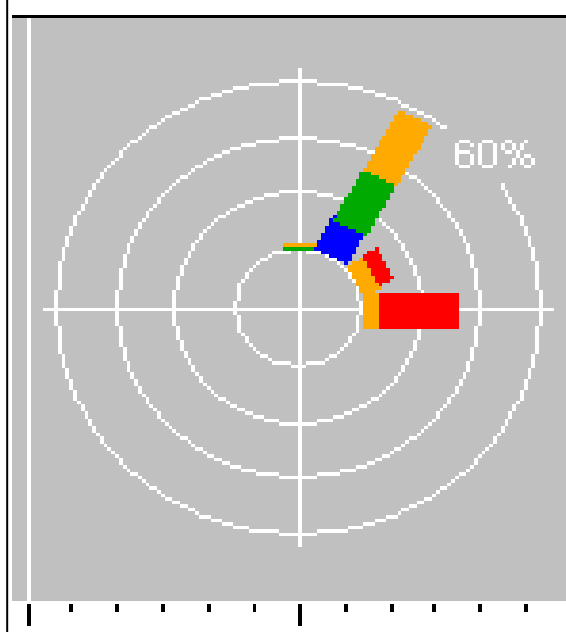
Typical data:



Several wind roses are provided



- WindRose % of time wind was from each direction:
- SpeedRose % of windrun from each direction
- EnergyRose % of wind energy from each direction

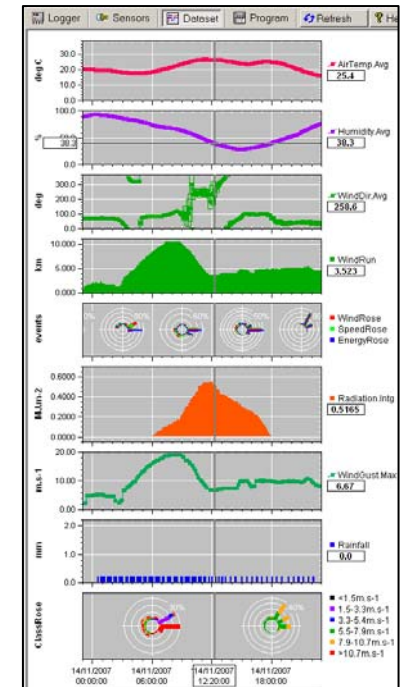


Class Rose: using Beaufort wind speed scale

- <1.5m.s⁻¹ % of time speed < 1.5m.s⁻¹
- 1.5-3.3m.s⁻¹
- 3.3-5.4m.s⁻¹
- 5.5-7.9m.s⁻¹
- 7.9-10.7m.s⁻¹
- >10.7m.s⁻¹

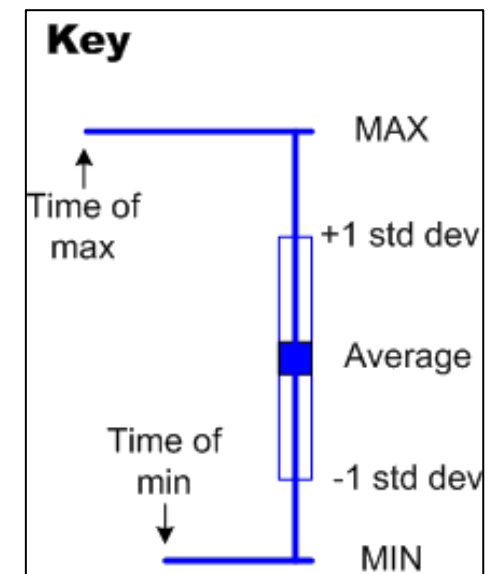
Right click to

- hide charts
- select 1, 10 or 30 days or all data
- resize whole charts or part of them



You can toggle on/off the following:

- point markers
- min and max symbols
- standard deviation
- time of occurrence markers



Compact all-in one weather station

Easy to use:

- **Highly portable**
- **Pre-wired for rapid set-up**
- **PDA and GSM modem download options**

Complete package:

- **Dependable, accurate sensors**
- **2m tripod mast**
- **Pre-installed weather logging program**



Further information

AT Delta-T Devices - Data Sheet
Weather Station type WS-GP1

Compact all-in-one weather station **NEW**

The WS-GP1 is an affordable weather station supplied as a ready-to-use package. Carefully matched, high grade sensors make the WS-GP1 a good choice for research and agricultural / environmental applications.

Easy to use:

- Highly portable
- Pre-wired for rapid set-up
- PDA and GSM modem download options

Complete package:

- Dependable, accurate sensors
- 2m tripod mast
- Pre-installed weather logging program

The WS-GP1 includes sensors to measure rain, solar radiation, wind speed, wind direction, relative humidity and air temperature.

Simple and convenient
A compact, self-powered, compact solution for recording weather data. The WS-GP1 can be set up in minutes and requires minimal maintenance. The internal battery provides 6 hours' location cycles for 3 years, much longer with optional internal lithium battery.

Accurate
The sensors are carefully matched for reliability and accuracy. Being based on the powerful GP1 Data Logger, the system provides high quality weather data at moderate cost.

Easy data collection
Data can be collected with a notebook PC, or by using the GSM modem option. Alternatively, Pocket Data-Log Software (optional) can be used to collect and view the data, or to reconfigure the logging level in the field.

Rugged
Despite their low cost, the sensors are operable and suitable for use in demanding environments. The galvanneal steel tripod and white painted galvanneal steel cross-arm ensure excellent physical strength.

APPLICATIONS
Agro-meteorology, Hydrology, Crop Trials, Environmental Science, Agriculture, Waste Management, Climatology, Agronomy, Environmental Impact Studies, Meteorology



Web site

<http://www.delta-t.co.uk/products.html?product2007050129328>



Delta-T Devices Ltd
130 Low Road,
Burwell
Cambridge
CB25 0EJ UK

Tel: +44 1638 742922

Fax: +44 1638 743155

e-mail: sales@delta-t.co.uk

web: www.delta-t.co.uk